



Self-adjusting Equipment with Targeted Wash Solutions

**WASHNETICS**  
THE SCIENCE OF AUTOMATING THE CAR WASH PROCESS

**BELANGER**   
*Inspired By You. Built By Belanger.*

(248) 349-7010 | [belangerinc.com](http://belangerinc.com)

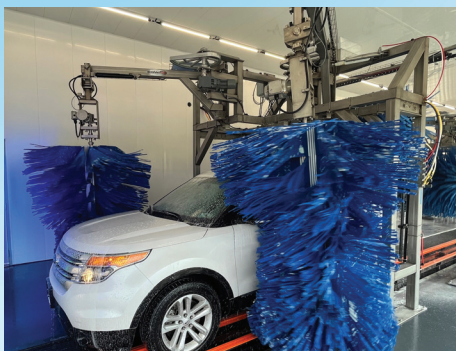
**OPW**   
VEHICLE WASH  
SOLUTIONS  
a **DOVER** company



The Accuspin is available in entrance-facing, exit-facing, and counter-rotating dual top washer configurations which offers several exciting advancements. With revolutionary pneumatics that quickly positions the top wheel for customized cleaning and the rebalanced design pivot point that provides optimal balance throughout the complete range of motion results in smoother operation and superior cleaning for every vehicle.

The Accuwrap and the Accuwrap Positioning System is an engineered solution for eliminating prep and delivering repeatable wash quality through the use of automation. The Accuwrap Positioning System enables the Accuwrap to self-adjust to the unique size and shape of each vehicle for improved cleaning, less vehicle impact and a more enjoyable customer experience.

This unique “automated” approach to cleaning vehicles enables higher throughput while providing improved cleaning with less equipment



# WASHNETICS

THE SCIENCE OF AUTOMATING THE CAR WASH PROCESS

Washnetics applies the principles of Autonetics, the science of automation, to automate the vehicle wash process.

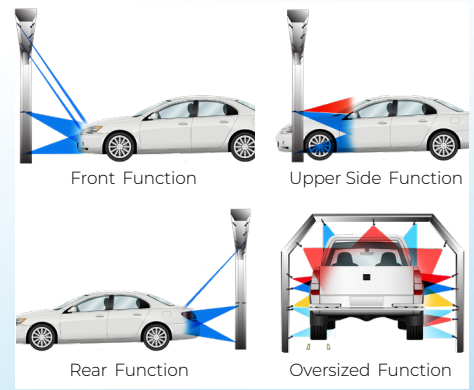


Meeting the Demands of the Exterior Express Market with:

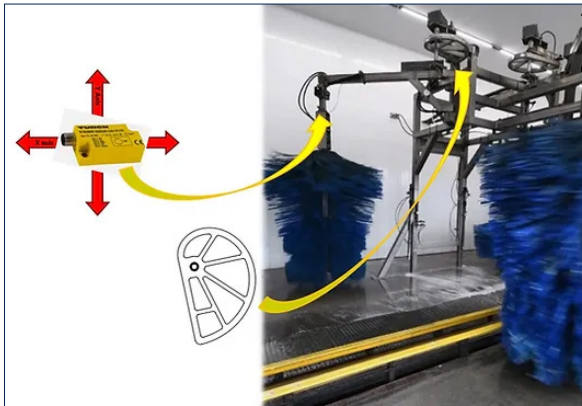
- Superior wash quality combined with speed of service
- High wash volume on a small parcel
- Reduced operating expenses
- Business automation
- Market penetration

Washnetics equipment is automated to self-adjust to the size and shape of each vehicle providing a customized wash process that results in superior wash quality. Competitive equipment utilizes a one-size-fits-all approach that does not address the fact that a Ford F-250 has different cleaning requirements than a Ford Mustang. Washnetics-enabled Accuwraps self adjust to the size and shape of each vehicle using a combination of innovative software and 3 unique components:

- Multi-axis inclinometers mounted on each wrap provide X-axis and Y-axis feedback on the exact position of the washer every 200 milliseconds.
- A combination of oversized cores and a custom configuration and cut of Neoglide wash material ensures that the wraps are properly positioned on each vehicle, and wash with the fingers of the wash material.
- Automated D-shaped cams use the feedback from the inclinometers to adjust the washer arms in real time to maintain a constant 3-degree angle on the vehicle which provides proper pressure and optimal cleaning

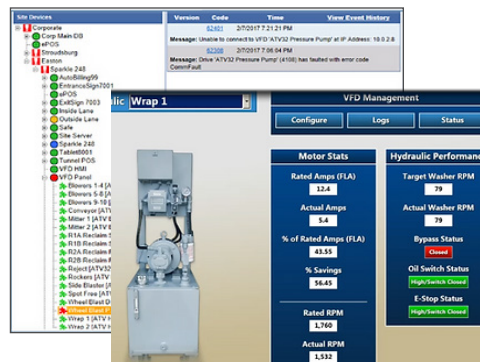


Washnetics utilizes a targeted approach to applying wash solutions. Wash solutions are targeted based on the size and shape of each vehicle through a combination of 4 functions (Front Function, Upper Side Function, Rear Function, and Oversized Function) which when combined provide for effective coverage of each vehicle. This targeted approach maximizes cleaning, and optimizes wash solutions, water, and sewer expenses while supporting your sustainability initiative.



Washnetics simplifies the management of your car wash through a combination of self-diagnosing equipment and automated reporting. Washnetics enabled equipment self diagnoses error states and sends an automated text or email to the appropriate resources (Owner, Manager, Distributor technician, etc.). Armed with actionable information the appropriate resources can be dispatched with the correct tools and parts required to address the issue quickly and efficiently saving you time and money.

In addition, the Washnetics Human Machine Interface (HMI) provides a simple graphics-based interface that allows users of all technical abilities to easily configure, monitor and correct equipment performance in real time.





## TRUSTED SINCE 1969

Whether you're a seasoned car wash operator or a first-time investor, one thing is true: the equipment you select for your wash will have a major impact on your businesses' success.

Your equipment needs to clean cars the way your customers want to wash their cars.

The equipment you choose should work to support your marketplace's washing preferences, meeting the needs of your customers, and your business, at your location.

As a full-line equipment manufacturer, Belanger makes more types of vehicle washes than anyone else – including conveyORIZED tunnels, touchless and soft-touch automatics, drive-thru and large vehicle washes.

Which means we'll work with you on the best format for your location's success – not push a 'one size fits all' approach.



Belanger 1001 Doheny Court, Northville, MI 48167 USA  
Tel: 866-4-Tunnel, or +1-248-349-7010  
[www.belangerinc.com](http://www.belangerinc.com)